

53. $\lim_{t \rightarrow t_0} C(t) = C(t_0)$ except at integers t_0
 $\lim_{t \rightarrow t_0^-} C(t) = C(t_0)$ everywhere
 $\lim_{t \rightarrow t_0^+} C(t) = C(t_0)$ if $t_0 \neq$ an integer
 $\lim_{t \rightarrow t_0^+} C(t) = C(t_0) + 1.5$ if t_0 is an integer

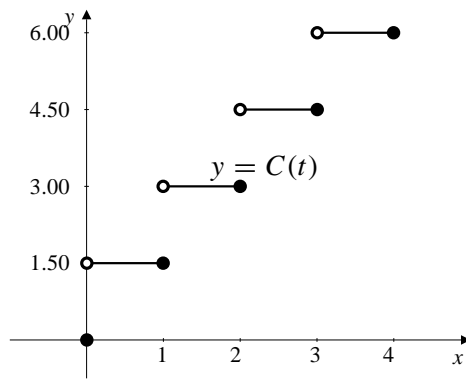


Fig. 3-53